

Syphon Reservoir Improvement Project: SAFETY FIRST



At Irvine Ranch Water District, safety is always our top priority. We have a six-decade legacy of safely designing, constructing and operating complex water projects that benefit our community.

The Syphon Reservoir Improvement Project is an investment to increase the capacity of an existing recycled water reservoir

to meet seasonal and future needs of the community. Our engineers and reservoir experts are studying the project and its potential impacts in an extensive environmental review process. We are committed to public safety as the cornerstone of everything we do.

Going Above and Beyond for Safety

IRWD is an experienced reservoir operator with a strong track record in reservoir construction, maintenance, performance and safety. To evaluate, design and build the proposed project, we are drawing from our decades of expertise, as well as a team of outside experts.

Our process includes:

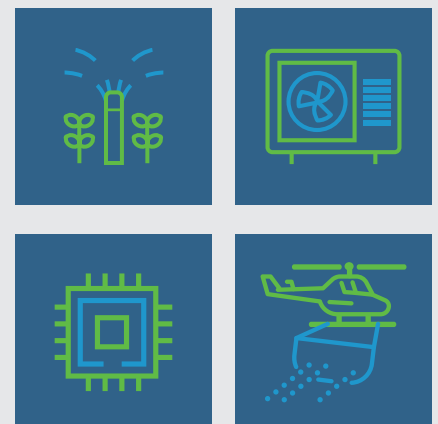
- Modernizing and upgrading the reservoir to meet and exceed the latest federal and state safety standards
- Conducting a rigorous peer review process overseen by a technical advisory panel of respected reservoir experts
- Preparing an Emergency Action Plan with input from agencies, stakeholders and other members of the community

Did you know?

IRWD operates five reservoirs in and around the Irvine community. All undergo regular state inspections and meet all requirements for safe use. In addition to the state inspections, we monitor all five reservoirs and dams daily and conduct more detailed monthly on-site inspections.

ABOUT RECYCLED WATER

Recycled water — water that has been safely treated for reuse after it goes down the drain — is an abundant, affordable and drought-proof source of water that helps us meet the nondrinking water needs of our community while preparing responsibly for the future. It's used for watering landscape, cooling office buildings, flushing toilets and mixing concrete, as well as for manufacturing, industry and fighting wildfires.



SAFETY FIRST

OVERVIEW: REGULATION & OVERSIGHT

CALIFORNIA DAMS ARE SUBJECT TO REGULATION AND OVERSIGHT BY THE CALIFORNIA DEPARTMENT OF WATER RESOURCES, DIVISION OF SAFETY OF DAMS (DSOD) TO:



Ensure they are safe

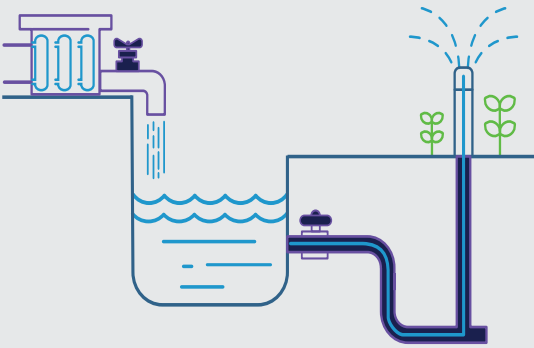


Meet performance requirements



Certify projects and upgrades

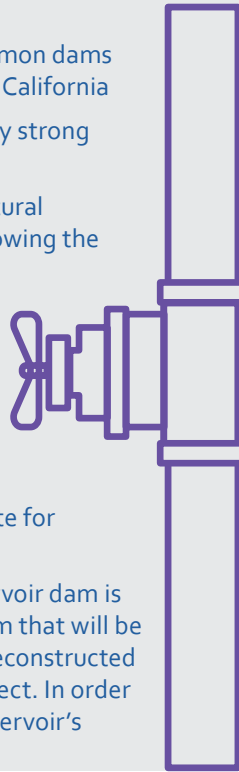
Syphon Reservoir: Designed for Safety



Similar to a bathtub, IRWD can turn on and off the water that flows in and out of Syphon Reservoir. This is because the reservoir does not receive any water from rivers or streams, so IRWD has complete control over how much water it holds.

Engineered dams:

- Are the most common dams found throughout California
- Have a consistently strong safety record
- Blend with the natural environment, following the contours of land
- Use compacted earth and rock materials from the immediate site — reducing the need to haul materials to the site for construction
- The Syphon Reservoir dam is an engineered dam that will be modernized and reconstructed as part of this project. In order to increase the reservoir's



storage capacity to ensure we can meet our future water needs, the dam height will increase from 59 feet to 136 feet.

- Construction is expected to take approximately two to three years. IRWD will make every effort to mitigate construction traffic and potential noise in the surrounding community throughout construction.



SAFETY ISN'T JUST OUR COMMITMENT, IT'S A CONVERSATION WITH THE COMMUNITY.

To learn more about the how IRWD is prioritizing the safety of our community:

- Visit our website at syphonreservoirproject.com
- Email us at info@irwd.com
- Call us at 949-453-5500