

Name of Public Agency Approving and Carrying out this Project:

Irvine Ranch Water District (IRWD)

Contact Person: Jo Ann Corey, Engineering Technician III

Area Code 949 Phone 453-5326

Exempt Status: (check one)

- Ministerial (Sec 21080(b)(1); (State Guidelines Sec. §15268)
- Declared Emergency (Sec 21080(b)(3); State Guidelines Sec. §15269(a))
- Emergency Project (Sec 21080(b)(4); (State Guidelines Sec. §15269(b)(c))
- Categorical Exemption (State Guidelines Sec. §15301)
- Categorical Exemption (State Guidelines Sec. §15302)
- Categorical Exemption (State Guidelines Sec. §15303)
- Categorical Exemption (State Guidelines Sec. §15306)
- Statutory Exemption State code number (State Guidelines §15282)

Reasons why project is exempt:

The concrete pads and pallet racks are minor alterations that will be installed on a previously disturbed, interior section of the Michelson Water Recycling Plant's Purchasing warehouse. The concrete pads and pallet racks represents no expansion of use. This work is exempt under Categorical Exemption 15301.

Class 1 consists of the operation, repair, maintenance, or minor alteration of existing public or private structures, facilities, mechanical equipment, or topographical features, involving negligible or no expansion of use beyond that existing at the time of the lead agency's determination.

Submission of this form is optional. Local agencies may file this form with the county clerk pursuant to Public Resources Code Section 21152(b). The filing of the notice starts a 35-day statute of limitations on court challenges to the approval of the project under Public Resources Code Section 21167(d). Failure to file the notice results in the statute of limitations being extended to 180 days.

POSTED
DEC 19 2012
 ORANGE COUNTY CLERK-RECORDER DEPARTMENT
 BY: AO DEPUTY

FILED

DEC 19 2012

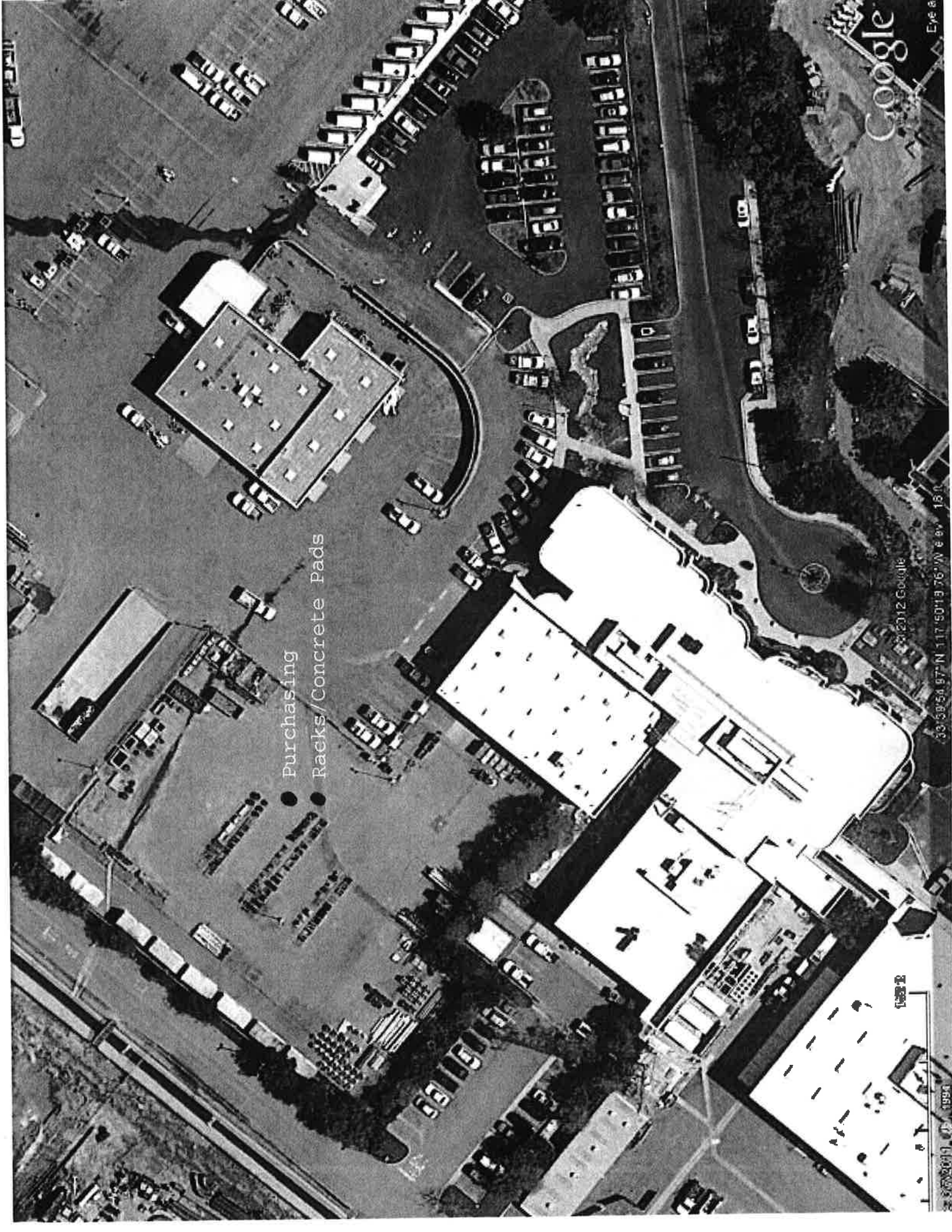
ORANGE COUNTY CLERK-RECORDER DEPARTMENT

BY: AO DEPUTY

Jo Ann Corey
Staff Member Responsible for Preparation

Leslie Bankard
District Secretary

12/19/12
Date



Google

Eye all

Purchasing
Racks/Concrete Pads

© 2012 Google

33°58'50.97"N 117°50'13.76"W Elev. 18.0'

10000

© 2008 Google