



200985000696 11:40am 08/21/09

90 166 Z01

0.00 0.00 0.00 0.00 0.00 0.00 0.00 0.00

Exempt per Gov't Code 6103

RETURN TO: Christian Kessler
Irvine Ranch Water District
P.O. Box 57000
15600 Sand Canyon Ave
Irvine, CA 92619-7000

NOTICE OF EXEMPTION
(State Guidelines §15062)

County Clerk's Filing Stamp

POSTED

AUG 21 2009

TO: County Clerk
County of Orange
700 Civic Center Drive West
Box 838
Santa Ana, CA 92701

FILED

TOM DALY, CLERK-RECORDER

By [Signature] DEF

AUG 21 2009

TOM DALY, CLERK-RECORDER

By [Signature] DEPUTY

FROM: Irvine Ranch Water District
(Applicant/Lead Agency)
P.O. Box 57000
15600 Sand Canyon Ave
Irvine, CA 92619-7000

Project Name: SCADA Backbone Network Upgrade Project and AMI Pilot Project

Project Location: Irvine, Lake Forest & Newport Coast

County: Orange

Description of Nature, Purpose and Beneficiaries of Project:

The Irvine Ranch Water District (IRWD or District) uses Supervisory Control And Data Acquisition (SCADA), a radio communication network used to exchange data between various facilities and the Water Operations Center SCADA system through seven hilltop radio access points. Due to IRWD's large service area, IRWD staff relies heavily on the SCADA Network to remotely control and monitor pump stations, reservoirs and chemical feed systems to insure the delivery of safe, clean, drinking water for consumption and fire protection. Upgrades to the SCADA system are needed to support increased data capacity and data speed, advanced network monitoring and control, ultimate build out of the District infrastructure, and potential uses such as security monitoring.

37741641

W

FILED

AUG 2 1 2009

By *AW* TOM DALY, CLERK-RECORDER
DEPUTY

Paired with the SCADA Backbone Network Upgrade Project is a pilot project to test Advanced Metering Infrastructure (AMI), a communications network that transfers residential and commercial usage data to the IRWD Sand Canyon Headquarters for billing purposes. Two locations, Los Alisos Reclamation Plant (LARP) and the Baker Water Treatment Plant (Baker WTP) were identified as preferred locations in the AMI pilot project. These two locations will be fitted with the necessary equipment to perform AMI performance testing.

The scope of the combined SCADA Backbone Network Upgrade and AMI projects will include existing IRWD facility locations listed below.

Michelson Water Treatment Plant

Construction will include the installation of a 120 foot radio tower, various radio equipment and security lighting located on the northwest corner of the Michelson Water Treatment Plant Operations building as a part of the IRWD SCADA system. (Figure 1 & 2)

By *AW* TOM DALY, CLERK-RECORDER
DEPUTY

AUG 2 1 2009

POSTED

Signal Peak Pump Station

Construction will include the installation of a 27 foot radio tower and associated radio equipment as a part of the IRWD SCADA system. The tower will be constructed on the existing IRWD Signal Peak pump station. (Figure 3 & 4)

San Joaquin Reservoir

Construction will include the installation of an antenna and associated radio equipment as a part of the IRWD SCADA system at an existing IRWD control panel. (Figure 5 & 6)

Zone 3 West Pump Station

Construction will include the replacement of an antenna and associated radio equipment as a part of the IRWD SCADA system. This work will take place between the two reservoirs, at an existing IRWD facility. (Figure 7 & 8)

Zone 6A West Reservoir

Construction will include the installation of new antennas and associated radio equipment as a part of the IRWD SCADA system. The antenna and radio equipment will be installed directly onto the side of the existing Zone 6A Reservoir. (Figure 9 & 10)

Baker Water Treatment Plant

Construction will include the installation of a 100 foot radio tower and associated radio equipment as a part of the IRWD SCADA system and the IRWD Automatic Meter Infrastructure (AMI) Pilot Project. This tower will be constructed at the west side of the existing Baker Water Treatment Plant. (Figure 11 & 12)

Los Alisos Reclamation Plant

Construction will include the installation of an 80 foot radio tower and associated radio equipment as a part of the IRWD Automatic Meter Infrastructure (AMI) Pilot Project. The tower will be constructed at the center of Los Alisos Reclamation Plant, surrounded by the treatment ponds. (Figure 13)

POSTED

FILED

AUG 21 2009

AUG 21 2009

TOM DALY, CLERK-RECORDER

TOM DALY, CLERK-RECORDER

Reasons why project is exempt: By [Signature] DEPUTY

By [Signature] DEPUTY

The activity is categorically exempt from the California Environmental Quality Act (CEQA) as authorized under the California Code of Regulations, Title 14, Chapter 3, Sections 15301 (class 1). Class 1 consists of the operation, repair, maintenance, or minor alteration of existing public or private structures, facilities, mechanical equipment, or topographical features, involving negligible or no expansion of use beyond that existing at the time of the lead agency's determination.

Additionally, the Los Alisos Reclamation Plant and the Baker Water Treatment Plant locations are exempt under the California Code of Regulations, Title 14, Chapter 3, Sections 15306 (class 6). Class 6 consists of basic data collection, research, experimental management, and resource evaluation activities which do not result in a serious or major disturbance to an environmental resource.

Exempt Status: (check one)

- Declared Emergency (State Guidelines §15269(a))
- Emergency Project (State Guidelines §15269(b) or (c))
- Categorical Exemption (State Guidelines §§15301)
- Categorical Exemption (State Guidelines §§15306)

Name of Public Agency Approving and Carrying out this Project:

Irvine Ranch Water District (IRWD)

Contact Person: Christian Kessler, Engineering Technician

Area Code 949 Phone 453-5441

Submission of this form is optional. Local agencies may file this form with the county clerk pursuant to Public Resources Code Section 21152(b). The filing of the notice starts a 35-day statute of limitations on court challenges to the approval of the project under Public Resources Code Section 21167(d). Failure to file the notice results in the statute of limitations being extended to 180 days.

Christian Kessler
Staff Member Responsible for Preparation
[Signature]
District Secretary

Date _____

AUG 21 2009

TOM DALY, CLERK-RECORDER

DEPUTY

By

DEPUTY



Figure 1- Michelson Water Treatment Plant Vicinity Map

AUG 21 2009

TOM DALY, CLERK-RECORDER

DEPUTY

By

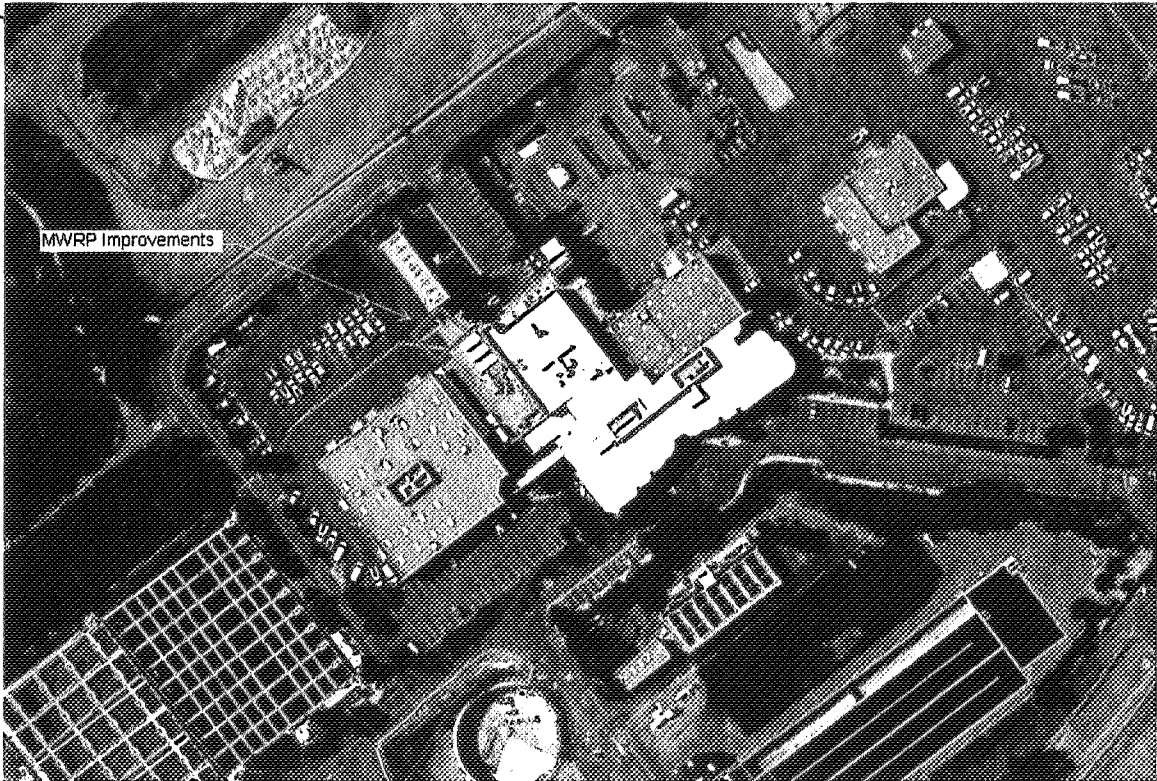


Figure 2- Michelson Water Treatment Plant Improvements Location Map



Figure 3- Signal Peak Vicinity Map

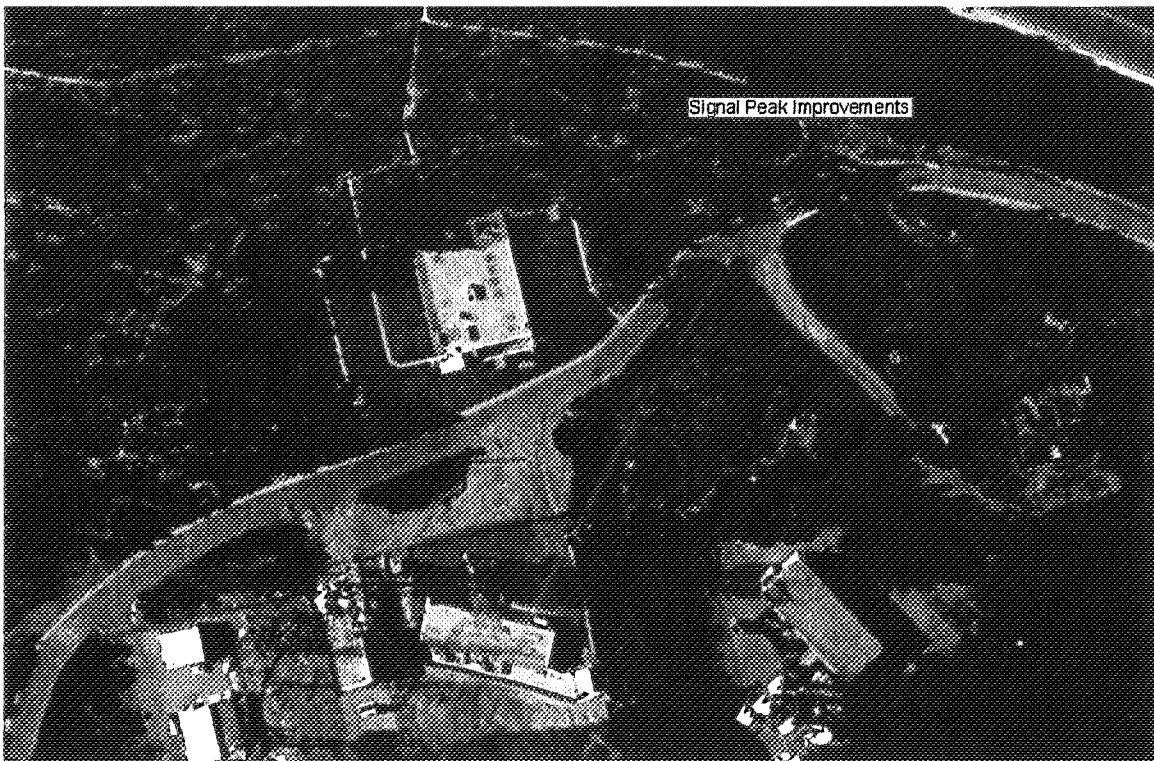


Figure 4 Signal Peak Improvements Location Map

FILED

AUG 21 2009

TOM DALY, CLERK-RECORDER

By RV DEPUTY

POSTED

AUG 21 2009

TOM DALY, CLERK-RECORDER

By RV DEPUTY

FILED

AUG 21 2009

By TOM DALY, CLERK-RECORDER DEPUTY

FILED

AUG 21 2009

By TOM DALY, CLERK-RECORDER DEPUTY

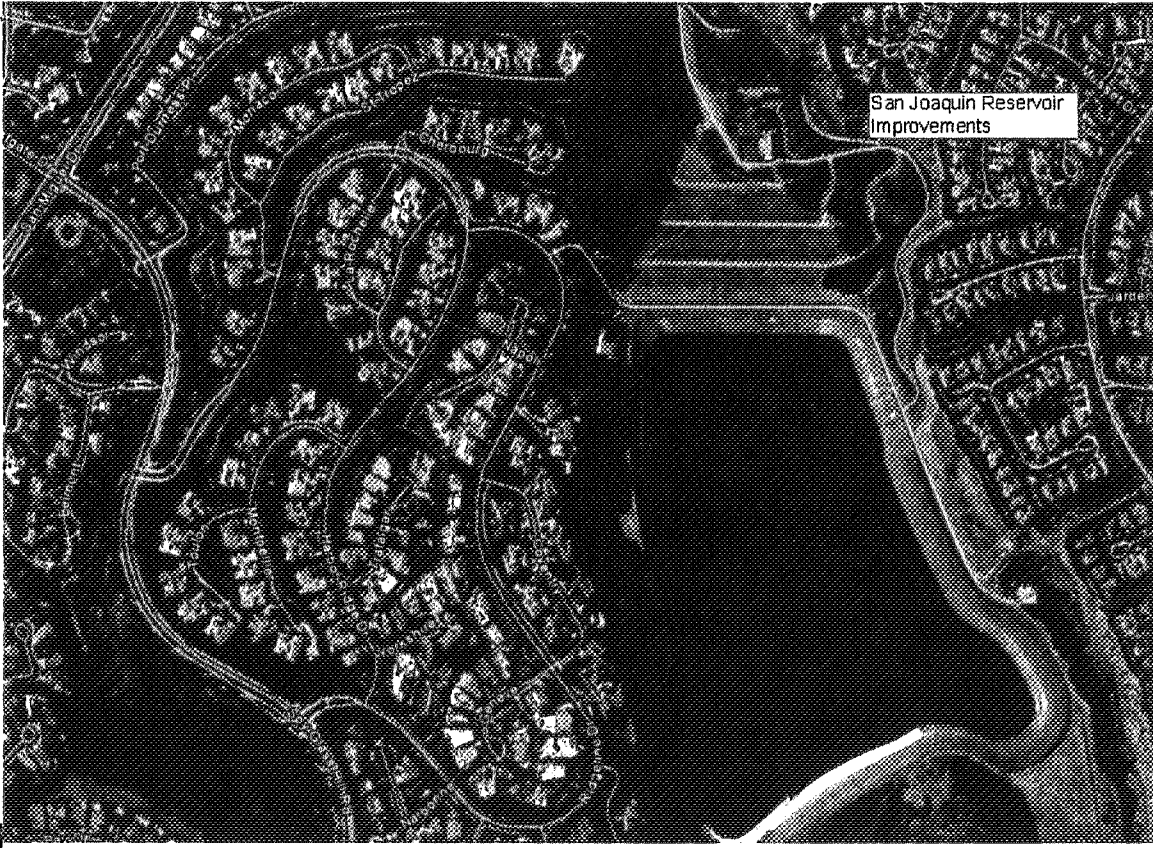


Figure 5- San Joaquin Reservoir Vicinity Map

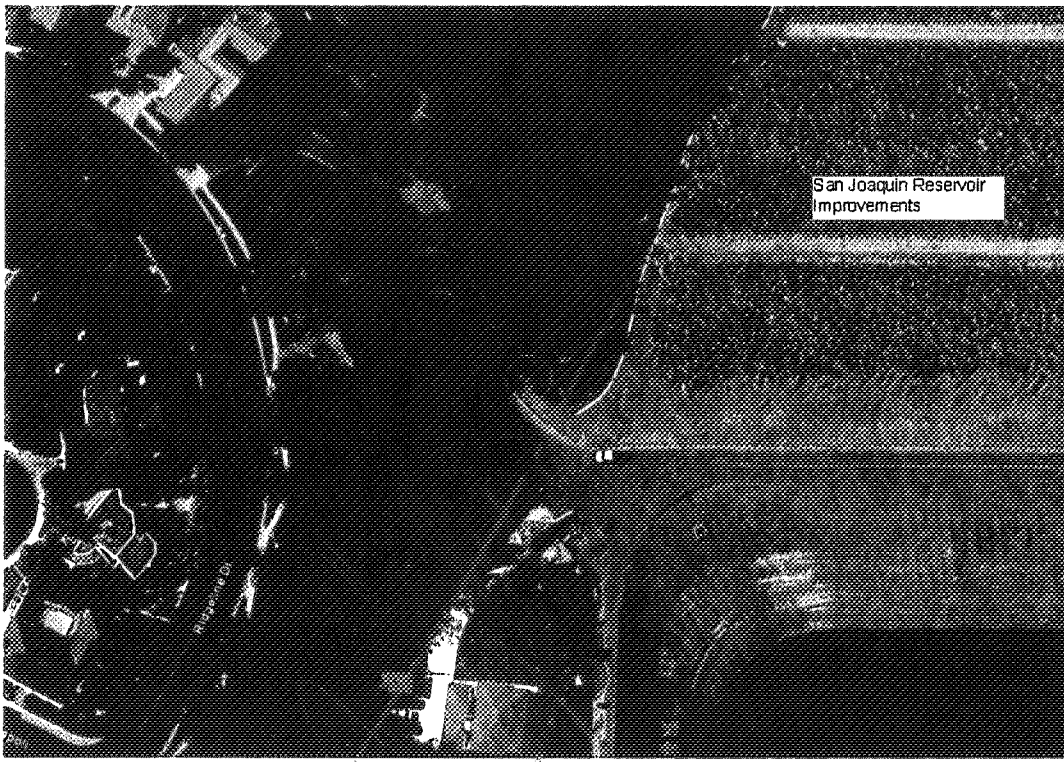


Figure 6- San Joaquin Reservoir Improvements Location Map



Figure 7- Zone 3 West Reservoir Vicinity Map



Figure 8- Zone 3 West Reservoir Improvements Location Map

FILED

AUG 21 2009

TOM DALY, CLERK-RECORDER

By DEPUTY

POSTED

AUG 21 2009

TOM DALY, CLERK-RECORDER

By DEPUTY



Figure 9- Zone 6 A West Vicinity Map

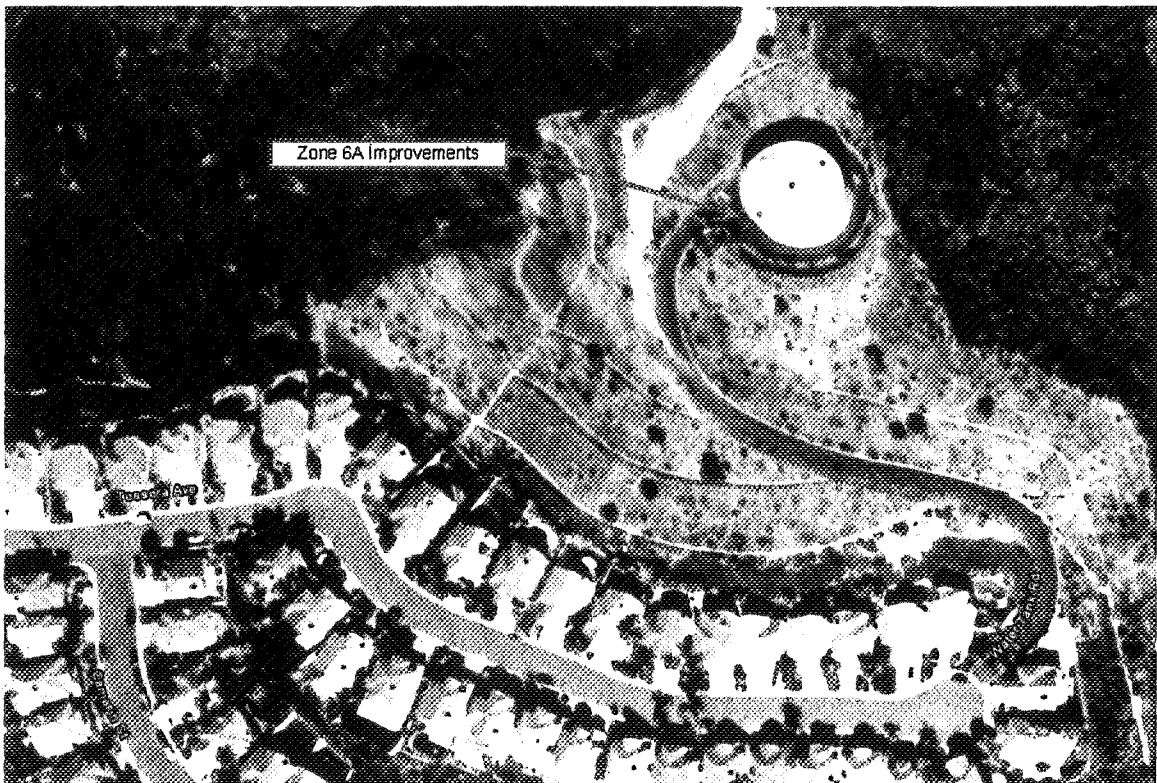


Figure 10- Zone 6 A West Improvements Location Map

FILED

AUG 21 2009

TOM DALY, CLERK-RECORDER

By [Signature]

POSTED

AUG 21 2009

TOM DALY, CLERK-RECORDER

By [Signature]

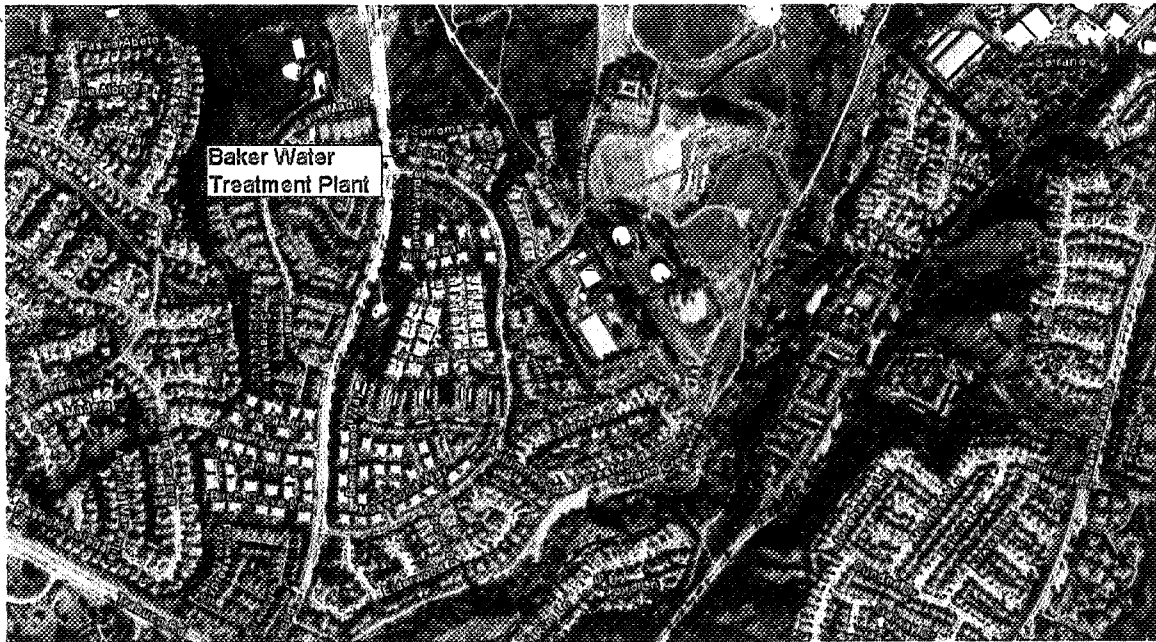


Figure 11- Baker Water Treatment Plant Vicinity Map

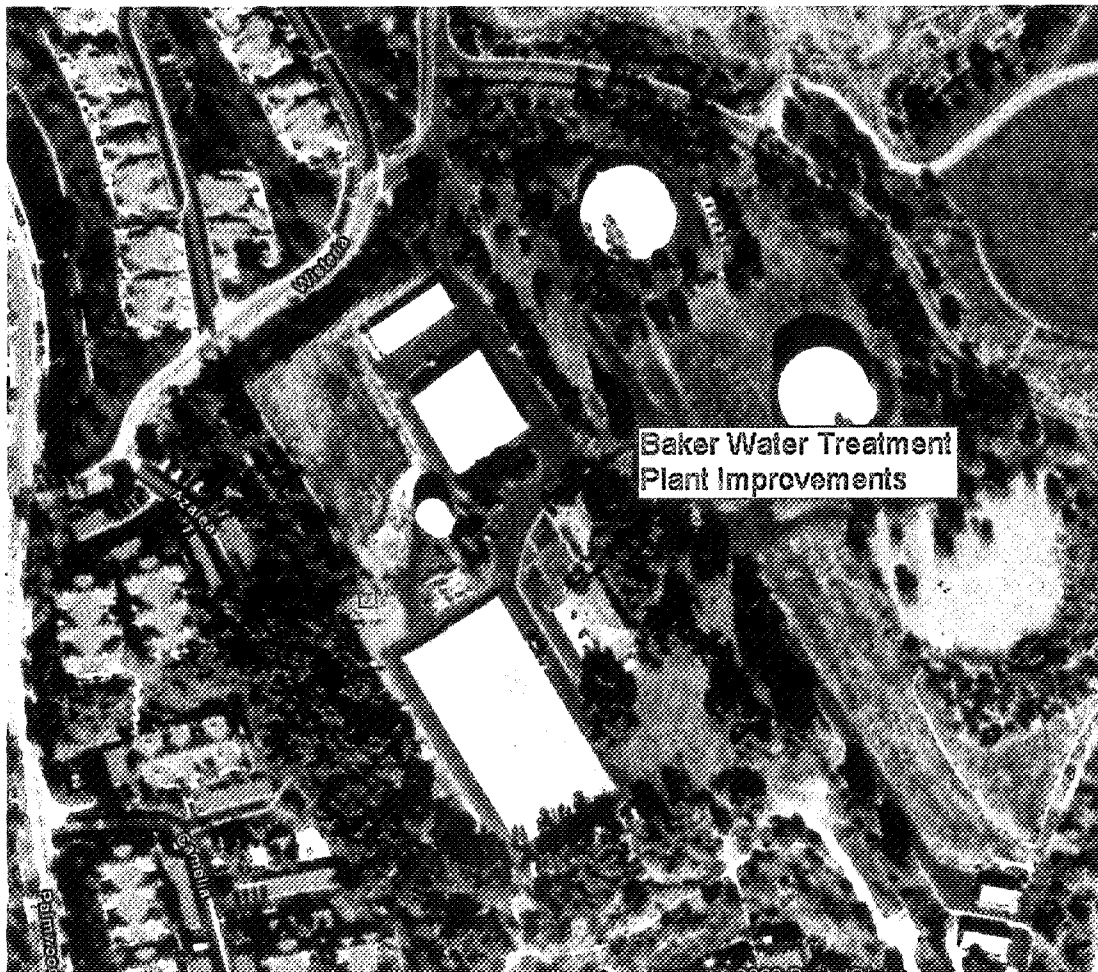


Figure 12- Baker Water Treatment Plant Improvements Location Map

FILED

AUG 21 2009

TOM DALY, CLERK-RECORDER

POSTED

AUG 21 2009

TOM DALY, CLERK-RECORDER

