



KERN FAN GROUNDWATER STORAGE PROJECT

August 19, 2020

INTRODUCTION TO ROSEDALE AND IRWD



Rosedale-Rio Bravo Water Storage District (Rosedale)

Established in 1959

Provides water replenishment to over 27,500 acres of irrigated agricultural lands. A CVP water user.



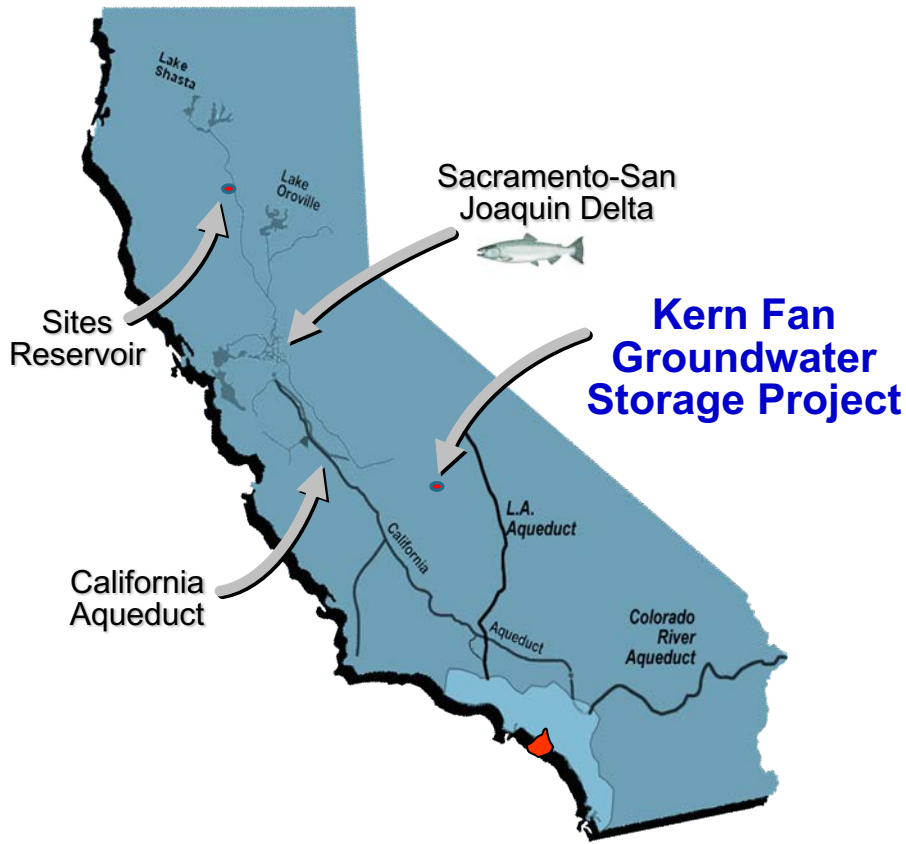
Irvine Ranch Water District (IRWD)

Established in 1961

Provides retail water, sewage and recycled water service to over 181 square miles in Orange County



Rosedale & IRWD have a long, successful history of jointly developing groundwater storage projects in Kern County



The Kern Fan Groundwater Storage Project:

- A new 100,000-acre-foot groundwater storage facility
- Stores “new” water otherwise lost to ocean
- Improves operational flexibility and resiliency
- Reduces pressure on the Delta ecosystem
- Provide water supply, fish and wildlife benefits
- Strategically located near federal, state, and local water conveyance facilities

Joint implementation by Rosedale and IRWD

PROJECT OVERVIEW



PROJECT FACILITIES AND CAPACITIES

New Conveyance from California Aqueduct

- New turnout
- New 10-mile canal with 500 cfs capacity
- 3 lift stations

1,050 Acres of Recharge Basins

- Wet year recharge capacity of 100,000 AF
- 100,000 AF storage capacity

12 Recovery Wells

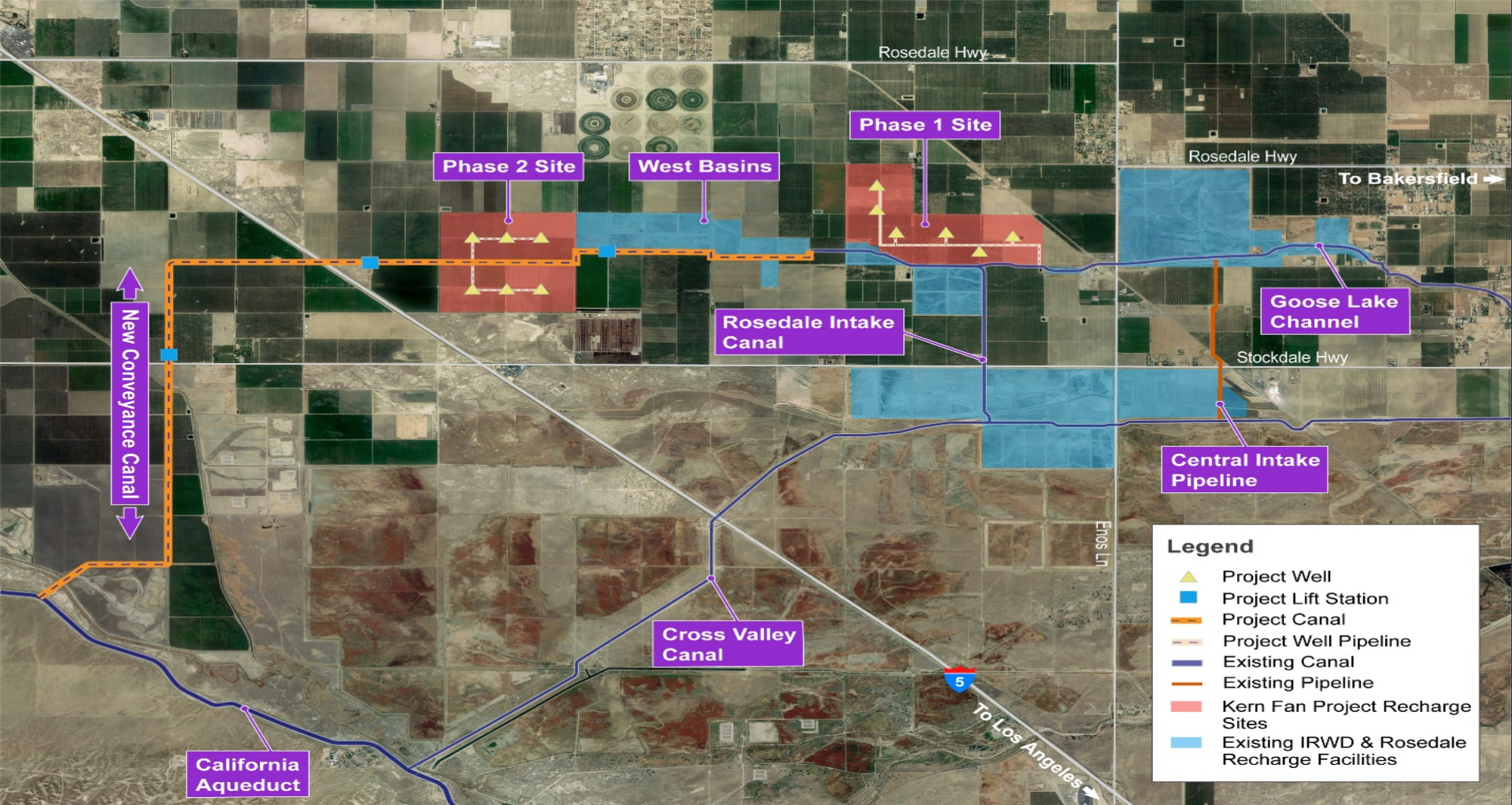
- Combined capacity up to 70 cfs

Stores “new” water otherwise lost to the ocean

- Article 21 water and other supplies

Improves flexibility in operation of State’s water systems

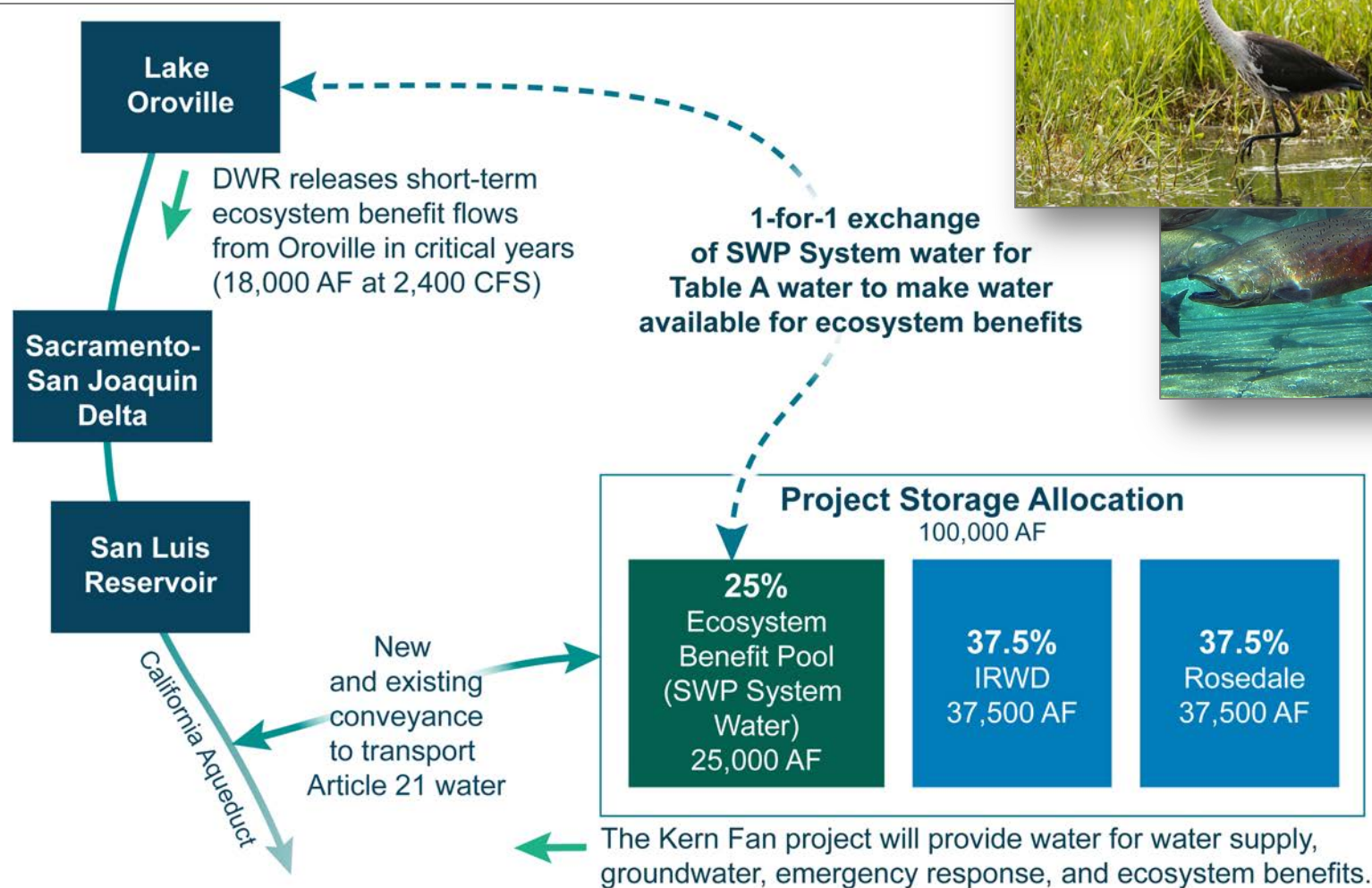
- No negative impacts to the SWP or CVP



PRELIMINARY PROJECT FACILITIES MAP

PROJECT OPERATIONS

Water Releases Coordinated to Benefit Species (e.g. chinook salmon & green sturgeon)



PROJECT COSTS & BENEFITS

Estimated Project Cost:
\$246 M



NPV of \$ 410 M in Benefits



**M&I AND
AGRICULTURE
WATER SUPPLY**



**SUPPLEMENTAL
WATER SUPPLY FOR
CRITICAL DROUGHTS
AND DELTA LEVEE
FAILURES**



**HABITAT FOR DELTA
FISH SPECIES**



**INTERMITTENT
WETLAND HABITAT**



**IMPROVED
GROUNDWATER
LEVELS**



**PERMANENT CROP
PRESERVATION &
ECONOMIC BENEFITS**

UNQUANTIFIED FEDERAL BENEFITS

- Water supply option for Federal Refuges
- Exchange programs with Friant Division contractors
 - ✓ Increased water supply during dry periods
- Opportunities for Recreation
 - ✓ Hunting
- Improved water quality in the Delta
 - ✓ Increased flexibility in CVP diversions to Federal Refuges
 - ✓ Increased flexibility in diversions to CVP contractors
- Diversion of Kern River Flood flows
 - ✓ Reduction in Federal Crop Insurance Losses
- Others



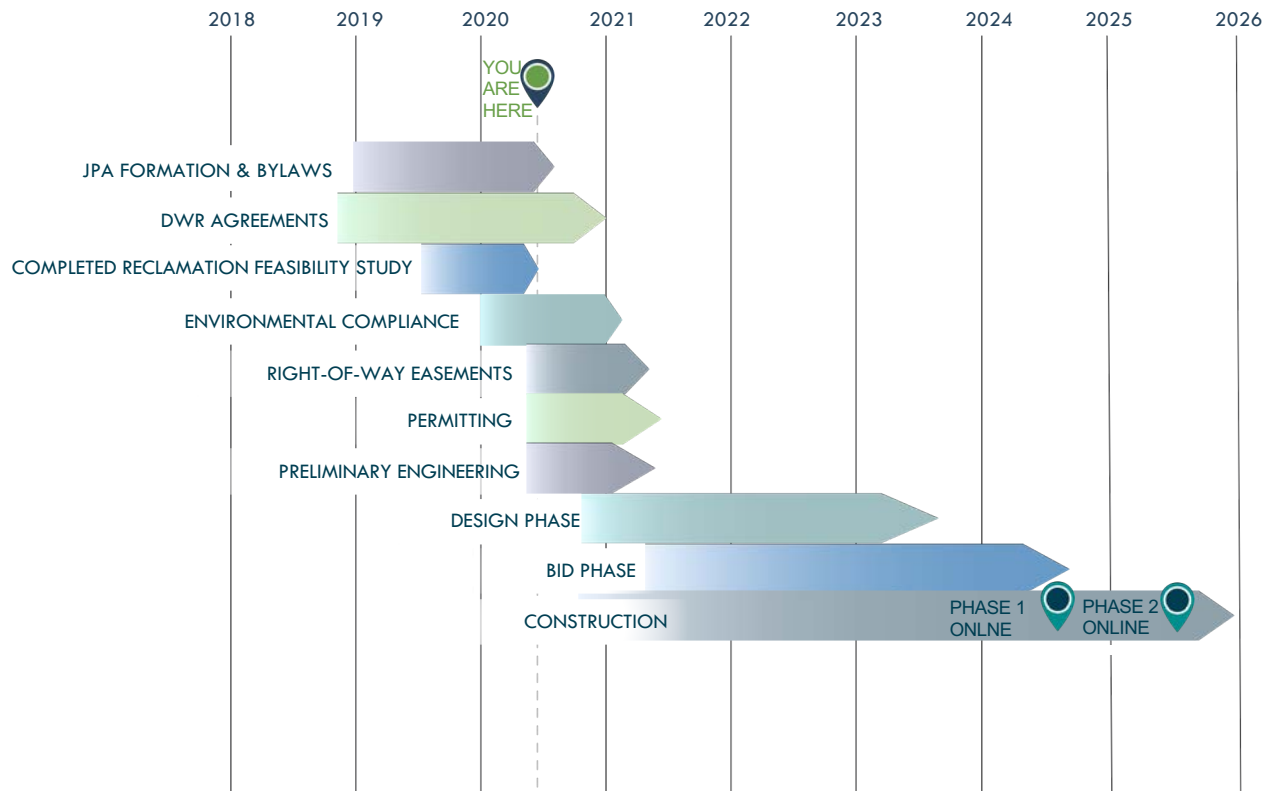
PROJECT STATUS

- ❑ Awarded \$67.5 million in California Prop. 1 Water Storage Funding
 - Project received California Water Commission's consistency determination and was included in Governor's letter requesting federal participation
- ❑ Feasibility Report submitted to Reclamation in October 2019
- ❑ 30% Design Report submitted to Reclamation in April 2020
- ❑ Design, Estimating and Construction (DEC) Review completed and Joint Resolution Memo finalized
- ❑ Reclamation has determined project meets the WIIN Act Section 4007 requirements and is eligible to be considered for funding pending:
 - Completion of a DEC Review (project technical feasibility);
 - Completion of NEPA compliance; and
 - Secretarial concurrence of technical and financial feasibility prior to January 2021
 - Completion of Policy Review
- ❑ Environmental compliance will be completed Fall 2020/
Early 2021



PROJECT SCHEDULE

Construction will begin by December 16, 2021



KERN FAN PROJECT'S FEDERAL NEXUS

Enhancing federal water goals and priorities to reduce pressure on the CVP.

- Increased flexibility in CVP diversions to Federal Refuges
- Increased flexibility in diversions to CVP contractors
- Water supply option for Federal Refuges
- Reduction in flood insurance losses
- Opportunities for recreation
- Exchange programs with Friant Division Contractors

The Kern Fan Project aligns with Reclamation's mission to develop economical and environmentally beneficial “new” water supplies and new storage while providing better management of the Nation's natural resources.

Funding Request:

**\$70.4 M in WIIN Act
Section 4007 funding**

Request of Great Basin Region:

**A Letter of Concurrence with DEC Review,
Joint Resolution Memo and Federal Benefits**

CONTACT INFORMATION



Eric Averett
General Manager, Rosedale
Office: (661) 589-6045
eaverett@rrbwsd.com

Roy Pierucci
President, Rosedale
Phone: (661) 303-8200
rapnitwithu0310@gmail.com



Paul Cook
General Manager, IRWD
Office (949) 453-5590
cook@irwd.com

Christine Compton
Govt' Relations Officer/Dep.
General Counsel
Office (949) 453-5338
compton@irwd.com